

Installation Manual for SM CCD USB spectrometers

1. Introduction

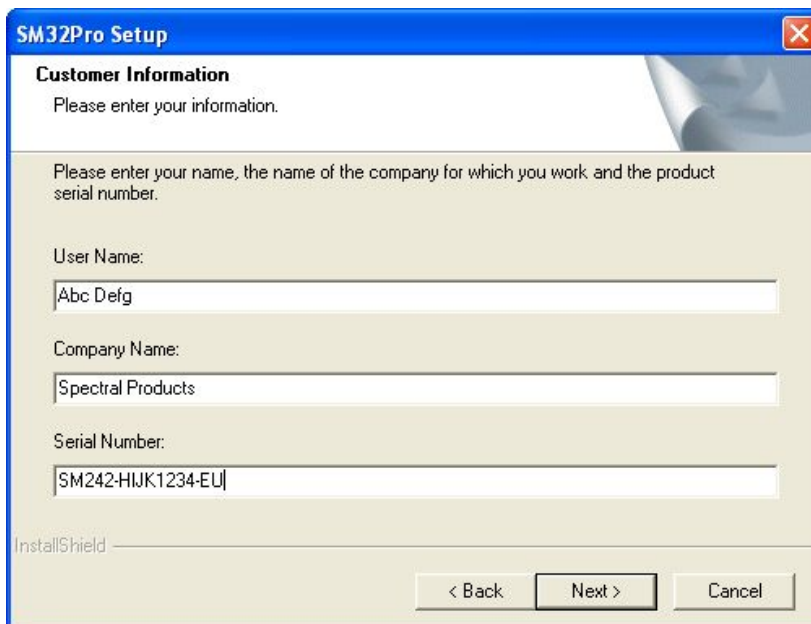
This manual contains instructions on how to install the SM32Pro, operation software for Spectral Products' SM200/240/241/520 USB version spectrometers and the USB drivers.

2. Process

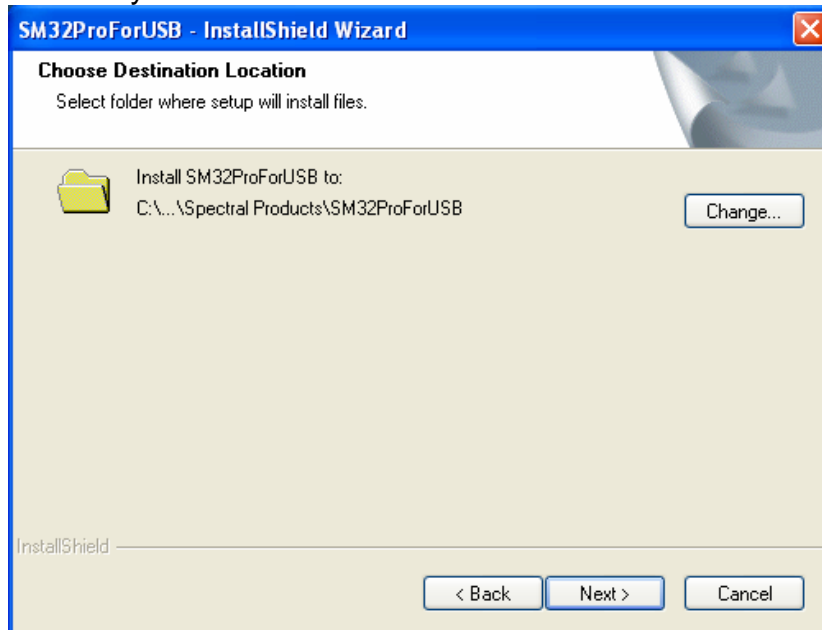
(Note) The USB spectrometer does not have to be connected to a computer before installing the SM32Pro software.

2-1. SM32Pro Installation

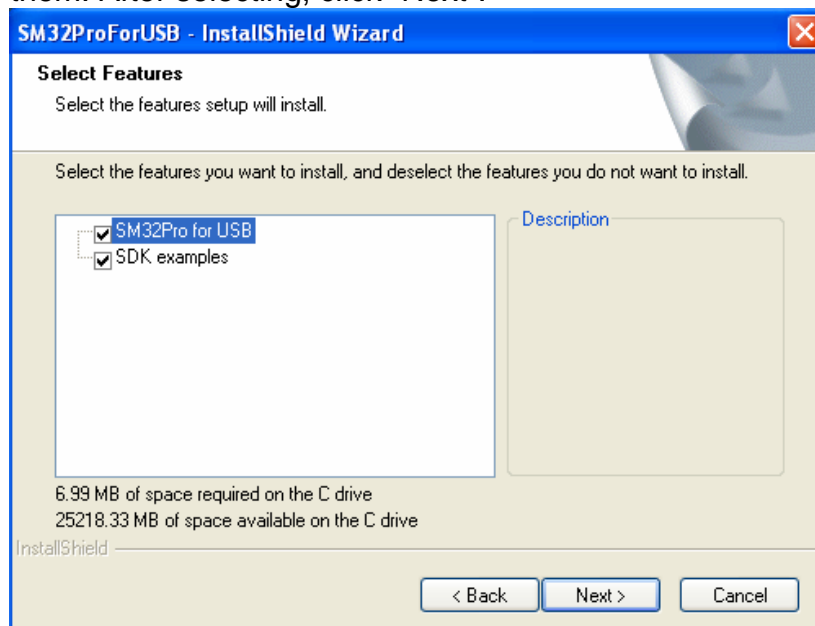
- (1) Insert the SM32Pro installation CD into the computer CD ROM.
- (2) When prompted, enter the instrument serial number as written on the SM spectrometer and then enter the data acquisition code. The code consists of two letters based on the data acquisition board manufacturer and interface types: The SM32ProForUSB is only for USB board users, so the ending of the serial number has to be always "EU".

A screenshot of the 'SM32Pro Setup' dialog box. The window title is 'SM32Pro Setup'. The main heading is 'Customer Information' with the instruction 'Please enter your information.' Below this, there is a sub-instruction: 'Please enter your name, the name of the company for which you work and the product serial number.' There are three text input fields: 'User Name:' containing 'Abc Defg', 'Company Name:' containing 'Spectral Products', and 'Serial Number:' containing 'SM242-HJK1234-EU'. At the bottom left, it says 'InstallShield'. At the bottom right, there are three buttons: '< Back', 'Next >', and 'Cancel'.

- (3) Choose the destination location to install the program. Click the Next button after setting the destination directory.



- (4) You can choose to install the SM32ProForUSB and/or the SDK examples by checking one or both of them. After selecting, click "Next".



- (5) Click the “Install” button when you are ready. If you would like to change anything in the process, just click “Back” until the stage required appears. If you click the “Install” button, the selected software package will be installed completely and the link icon to the program will appear on the computer desktop.

2-2. USB Driver installation

NOTE: SP developed two different types of USB boards, one for Sony ILX511 CCD and the other for Toshiba TCD1304 CCD. The Window Installation Wizard will show “SP SM ILX USB...” for the Sony ILX511 USB board and “SP SM TCD USB...” for the Toshiba TCD 1304 USB board.

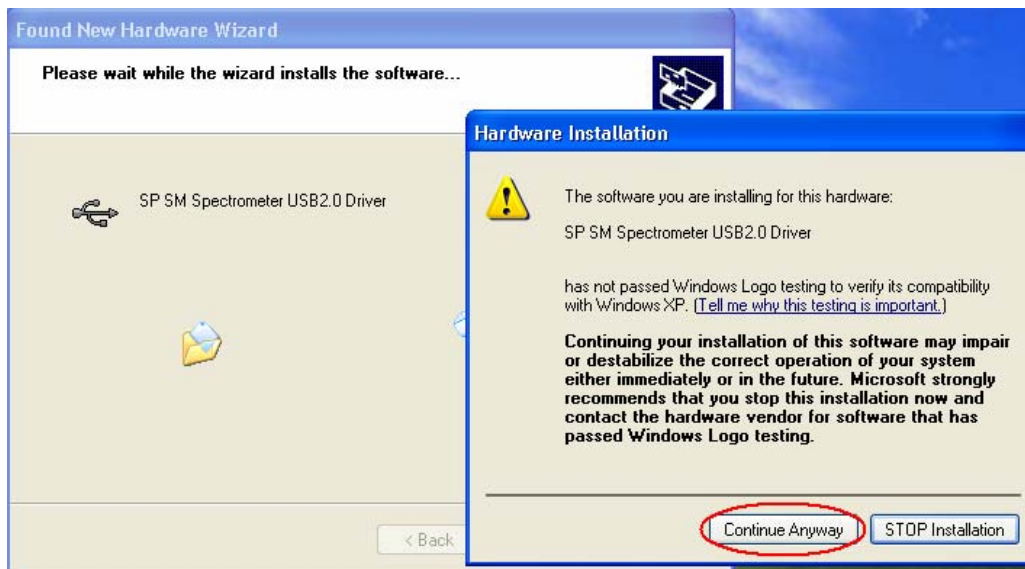
- (1) After installing the SM32Pro, plug the USB cable to the spectrometer and the computer.
(2) Windows will open the hardware update wizard. Check “No, not this time” and click “Next”.



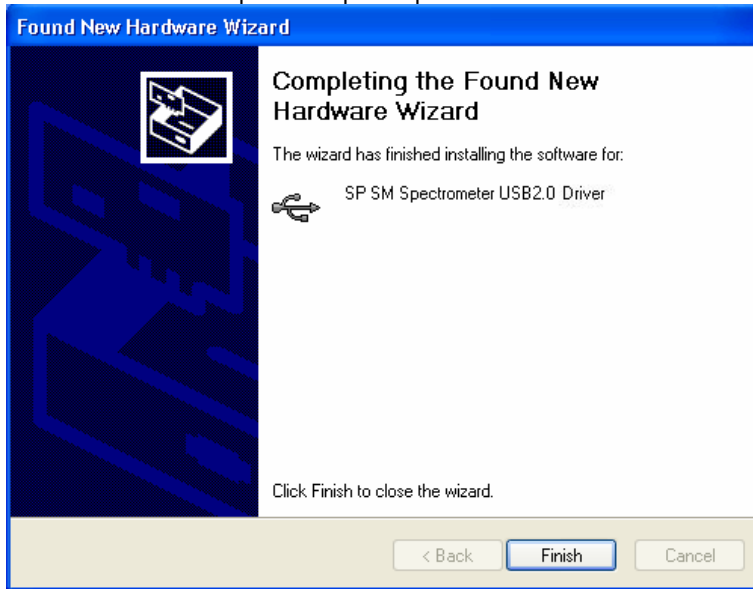
- (3) Click “Next” to install the USB driver



(4) When the hardware wizard opens the window below, click “Continue Anyway” to proceed with the installation.

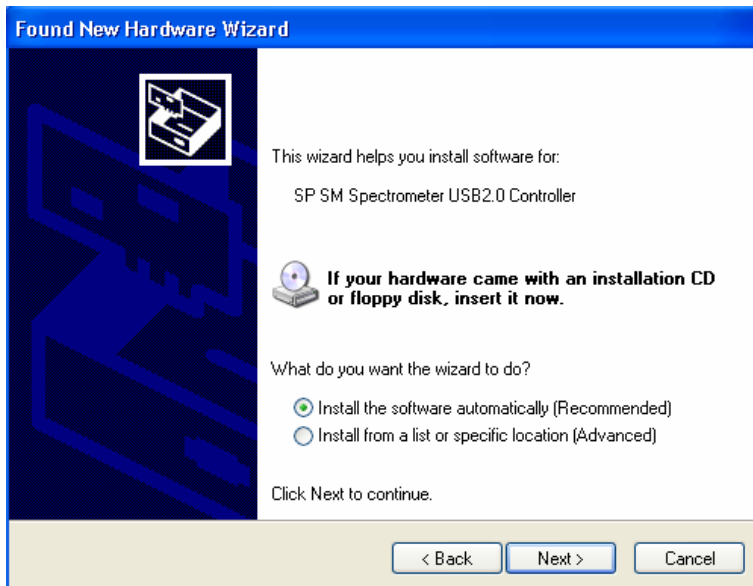


(5) When the USB driver installation is finished, click the “Finish” button.

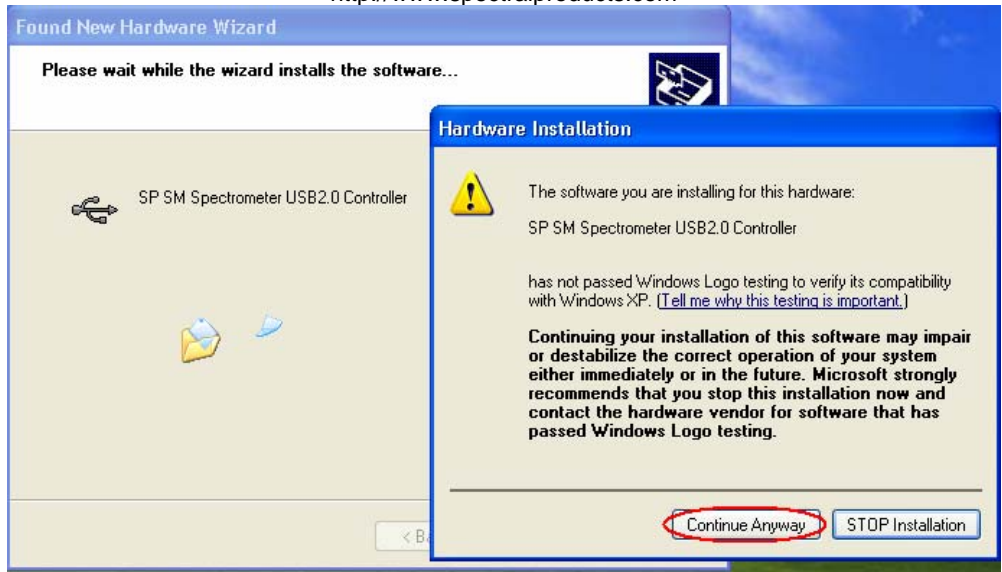


(6) After the USB driver installation, Windows will open another hardware installation wizard just like in step 2 to install the USB driver controller. Click “Next” as you did in step 2.

(7) Click “Next” to install the USB driver controller.



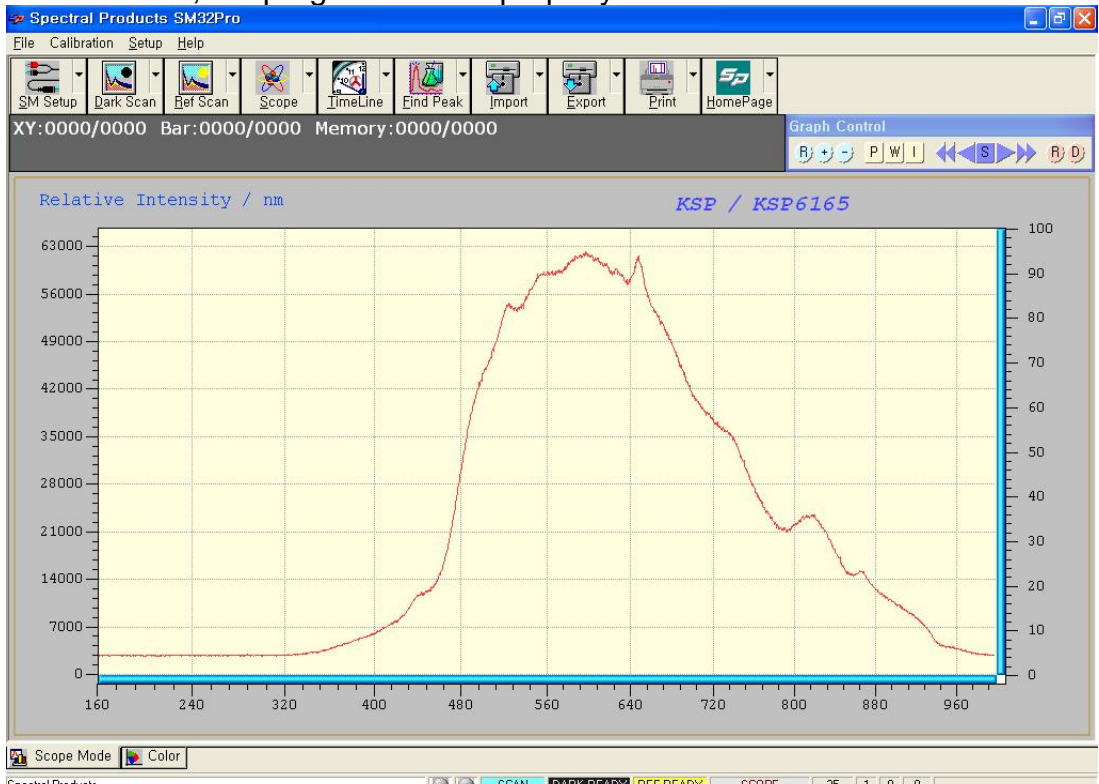
(8) When the hardware wizard opens the window below, click “Continue Anyway” to proceed with the installation as before.



(9) When the USB driver controller installation is finished, click “Finish” button.

3. Run SM32Pro

After all installation process is complete, some computers may ask you to reboot the system. We recommend that you reboot the computer in that case. To run the SM32Pro, double click the “SM32Pro” shortcut icon on the computer desktop. If there was no error during the installation, the program will run properly as below.





Spectrometers · Spectrophotometers · Color Instruments · Spectrographs · Monochromators

111 Highland Drive · Putnam, CT · 06260 · USA
PHONE (860) 928-5834 · FAX (860) 928-2676
<http://www.spectralproducts.com>

4. Technical support

Tel: (860) 928-5834
Fax: (860) 928-2676
Website: <http://www.spectralproducts.com>
Email: support@spectralproducts.com

To help us serve you most efficiently, please collect some information for us before you call:

1. A detailed description of your problem
2. The specific error or error message you received
3. Your system information;
 - a. Software version
 - b. Version of Windows (98, ME, 2000, NT, XP, etc.)
 - c. Unit Serial Number

Our technical staff can be most effective if you are sitting at the computer while consulting technical support.