

Spectral Products

Spectrometers · Spectrophotometers · Color Instruments · Spectrographs · Monochromators

111 Highland Drive · Putnam, CT · 06260 · USA
PHONE (860) 928-5834 · FAX (860) 928-2676
<http://www.spectralproducts.com>

Manual for SMPro MX Group List

The “Equipment Group List” is to connect multiple instruments at the same time and integrate each data to analyze, synchronously or asynchronously (if spectrometers are dissimilar in wavelength).

1. Connect multiple instruments

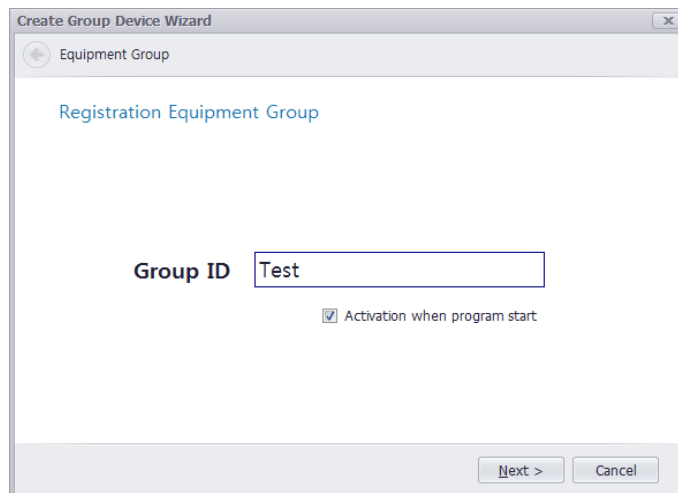
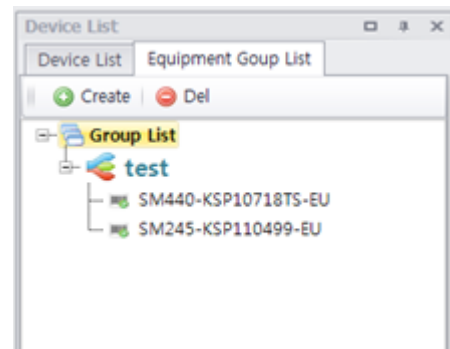
Click the “Equipment Group List” and then click “Create” button to make a group name.

2. Device group creation

It is created by group to easily compare and analyze the data of the different devices that you want to measure.

Device List - You can create a Group by tapping Create in the Equipment Group List Tab.

*Make sure all spectrometers are plugged into your computer securely.



Spectral Products

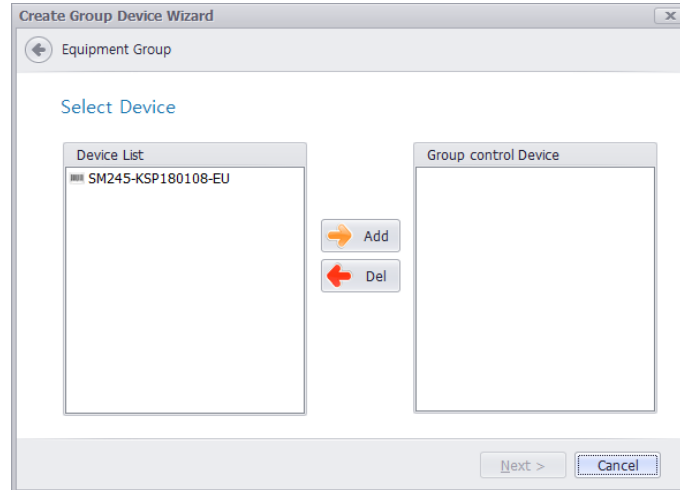
Spectrometers · Spectrophotometers · Color Instruments · Spectrographs · Monochromators

111 Highland Drive · Putnam, CT · 06260 · USA
PHONE (860) 928-5834 · FAX (860) 928-2676
<http://www.spectralproducts.com>

3. Group Registration Name:

Name the Group to set in the Group ID. After setting the Group name press the Next button to proceed to the next process.

* Activation when program start: SMPPro_MX to determine whether the group that was created immediately after the software is run.



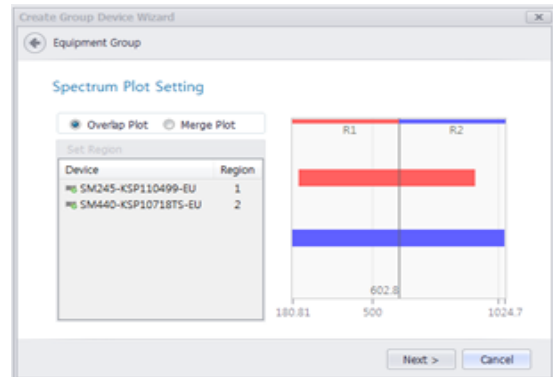
4. **Select Device:** You can add the device to be included in the Group via the Add button. If you incorrectly add the Device, you can remove it from the Group via the Del button.

* When selecting a continuous Device, shift + mouse left-click, discrete device selection, Ctrl + mouse left-click, you can select multiple devices.

* You can go back to the previous step by pressing the upper left arrow button in the Wizard window.

5. **Spectrum plot setting:** Determines how the data in the Device group is printed.

- a. **Overlap Plot:** Superimposes data from multiple devices on one graph and outputs them all.

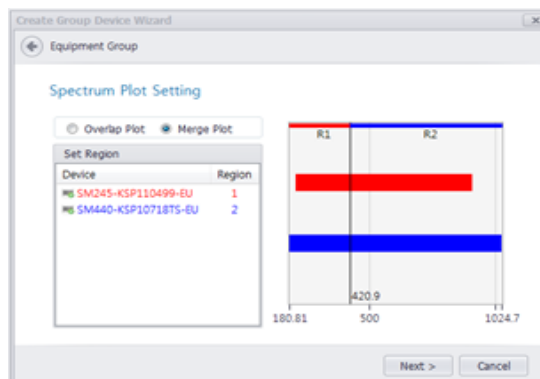


Spectral Products

Spectrometers · Spectrophotometers · Color Instruments · Spectrographs · Monochromators

111 Highland Drive · Putnam, CT · 06260 · USA
PHONE (860) 928-5834 · FAX (860) 928-2676
<http://www.spectralproducts.com>

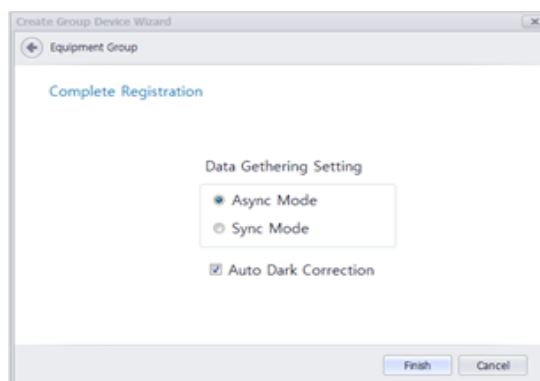
- b. **Merge Plot:** The device belonging to the Group divides the total wavelength area of the graph for each device, and the device prints the data to the graph only for the corresponding wavelength region.



6. Complete Registration: Determines how each device collects data.

- **Async Mode:** The data of the devices belonging to the Group is not collected at the same time, but each data is collected in an asynchronous manner. (Useful if spectrometers are close in wavelength)

- **Sync Mode:** The data of the Devices belonging to the Group is collected at the same time and each data is collected synchronously. (Useful if spectrometers are dissimilar in wavelength)



* The Dark of devices belonging to Auto Dark Correction Group is automatically set and applied.

※ If the Group you created is gray-disabled, please make sure that you are using the device included in the Group in another project.

※※ **During Merge Plot mode: If you would like to use the “Find Peak” function, check Sync Mode and don’t choose Auto Dark Correction option (Find Peak function will not work properly in Async Mode and/or with Auto Dark Correction).**

7. Group List Data Activation

To activate the devices window, right click the group ID name, and press Activation.

※Note for v5.5.x: Once a device has been added to a group, that device cannot be added to another group. The containing group must be deleted for the device to be added.

Spectral Products

Spectrometers · Spectrophotometers · Color Instruments · Spectrographs · Monochromators

111 Highland Drive · Putnam, CT · 06260 · USA
PHONE (860) 928-5834 · FAX (860) 928-2676
<http://www.spectralproducts.com>

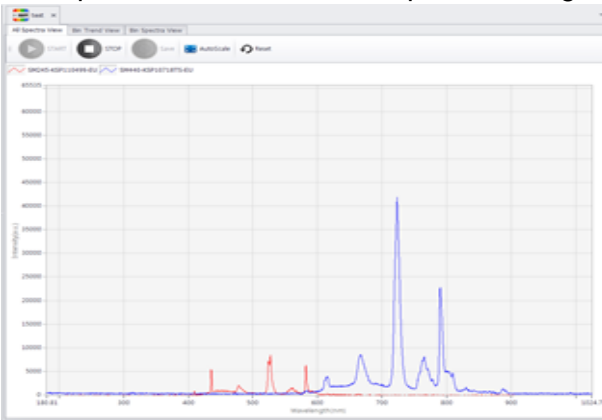
Group View Tab

A tab that graphs data measured by devices tied to a group. It consists of All spectra view, Bin Trend View, and Bin spectra view.

All Spectra view

If you choose Overlap Plot in Spectrum Plot Setting, all the data from the Device included in the group will be printed on one screen.

If you select Merge Plot in Spectrum Plot Setting, the data in the device included in the group will output like one data for the split wavelength region.



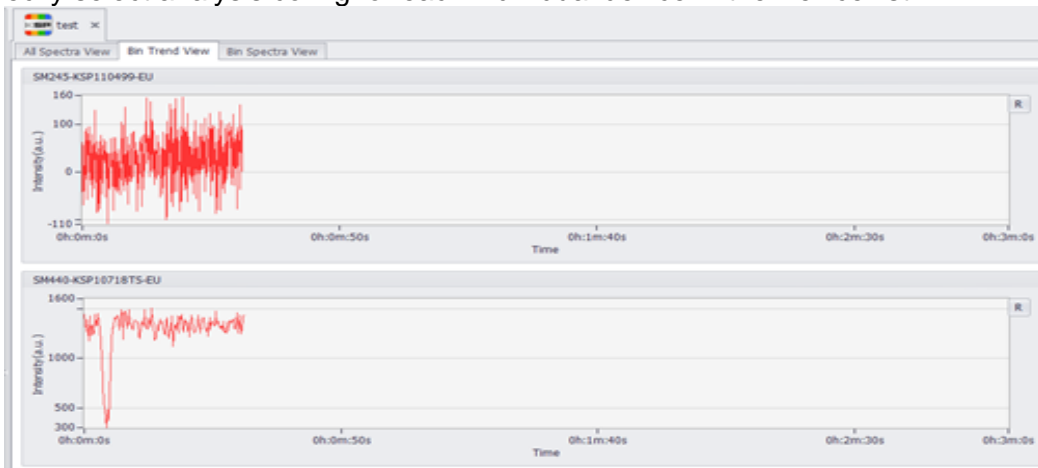
▲ Overlap plot



▲ Merge plot

Bin Trend View

You can collect time trends of the data that each Device has selected. To view Time Trend, you must specify select analysis config for each individual device in the Device list.



Spectral Products

Spectrometers · Spectrophotometers · Color Instruments · Spectrographs · Monochromators

111 Highland Drive · Putnam, CT · 06260 · USA
PHONE (860) 928-5834 · FAX (860) 928-2676
<http://www.spectralproducts.com>

Bin Spectra View

You can analyze the devices belonging to the Group individually, and device conversion can be done using the left tab located in the blue box of the picture.

