

Spectral Products

Spectrometers · Spectrophotometers · Color Instruments · Spectrographs · Monochromators

111 Highland Drive · Putnam, CT · 06260 · USA
PHONE (860) 928-5834 · FAX (860) 928-2676
<http://www.spectralproducts.com>

SM N Series to PC **Direct Network** **Manual**

Reference Model: SM245N
(Other N Models are the same)

Software: SMProMX

Spectral Products

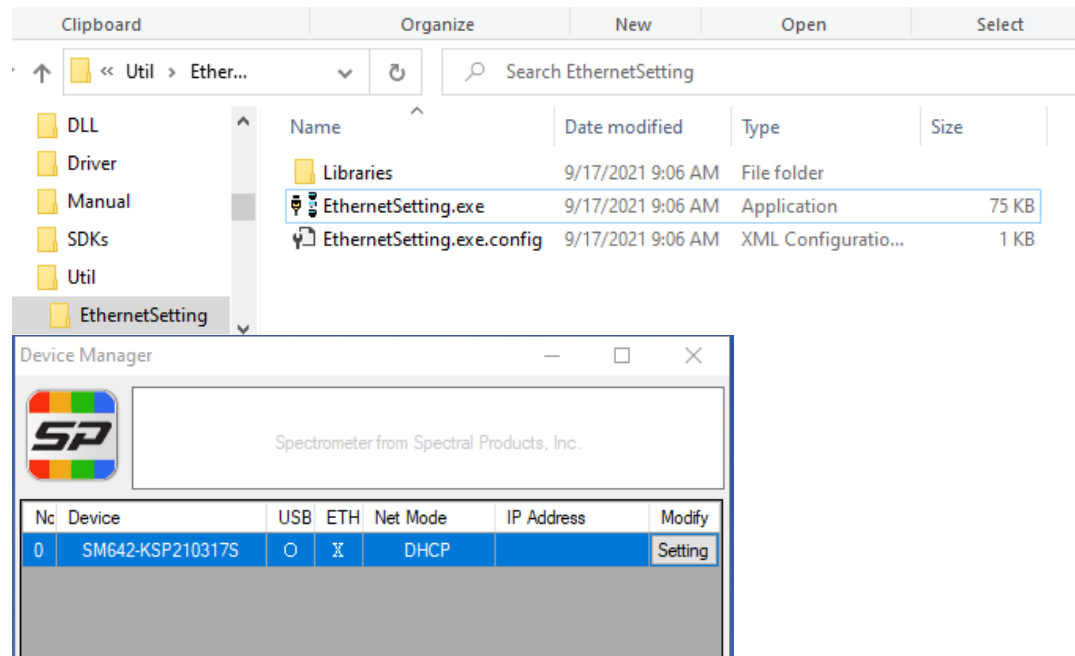
Spectrometers · Spectrophotometers · Color Instruments · Spectrographs · Monochromators

111 Highland Drive · Putnam, CT · 06260 · USA
PHONE (860) 928-5834 · FAX (860) 928-2676
<http://www.spectralproducts.com>

SM245N Static Mode Settings [When connecting Spectrometer to PC]



First, connect the power line and USB communication cable.



1. Run the Ethernet Setting software (\Util\EthernetSetting folder in the USB flash drive).
2. Information of the currently connected SM245N is displayed.
3. Click on “Setting” button.

Spectral Products

Spectrometers · Spectrophotometers · Color Instruments · Spectrographs · Monochromators

111 Highland Drive · Putnam, CT · 06260 · USA
PHONE (860) 928-5834· FAX (860) 928-2676
<http://www.spectralproducts.com>

4. Change from default **DHCP** Mode to **Static** Mode.

✂ DHCP Mode - In case of Ethernet connection through HUB

✂ Static Mode - When directly connecting PC and Spectrometer

5. After changing to Static Mode, write IP Address, Subnet Mask, and GATE Way. Any IP address would be OK. To avoid any IP conflict, using “192.168.0.xxx” is recommended. For the subnet mask, just choose “255.255.255.0” or “255.255.254.0”. The gate way address has to be the same as the IP address.

6. After writing, click the Apply button to apply the values.

✂ IP Address, Subnet Mask, and Gate Way are created for PC setting and managed separately for IP setting. These values will be reused when setting the network on the PC so if needed, please write the values (ref., page 5)

The screenshot shows a window titled "Ethernet Setting" with a close button (X) in the top right corner. Inside the window, there are two radio buttons: "DHCP" and "Static". The "Static" radio button is selected. Below the radio buttons, there are three text input fields: "IP Address" with the value "192.168.0.200", "Subnet Mask" with the value "255.255.255.0", and "GateWay" with the value "192.168.0.200". Below these fields is a section for "MAC Address" with a text input field containing "70:B3:D5:F5:90:51". At the bottom of the window, there are two buttons: "Apply" and "Cancel". The "Apply" button is highlighted with a red box.

Spectral Products

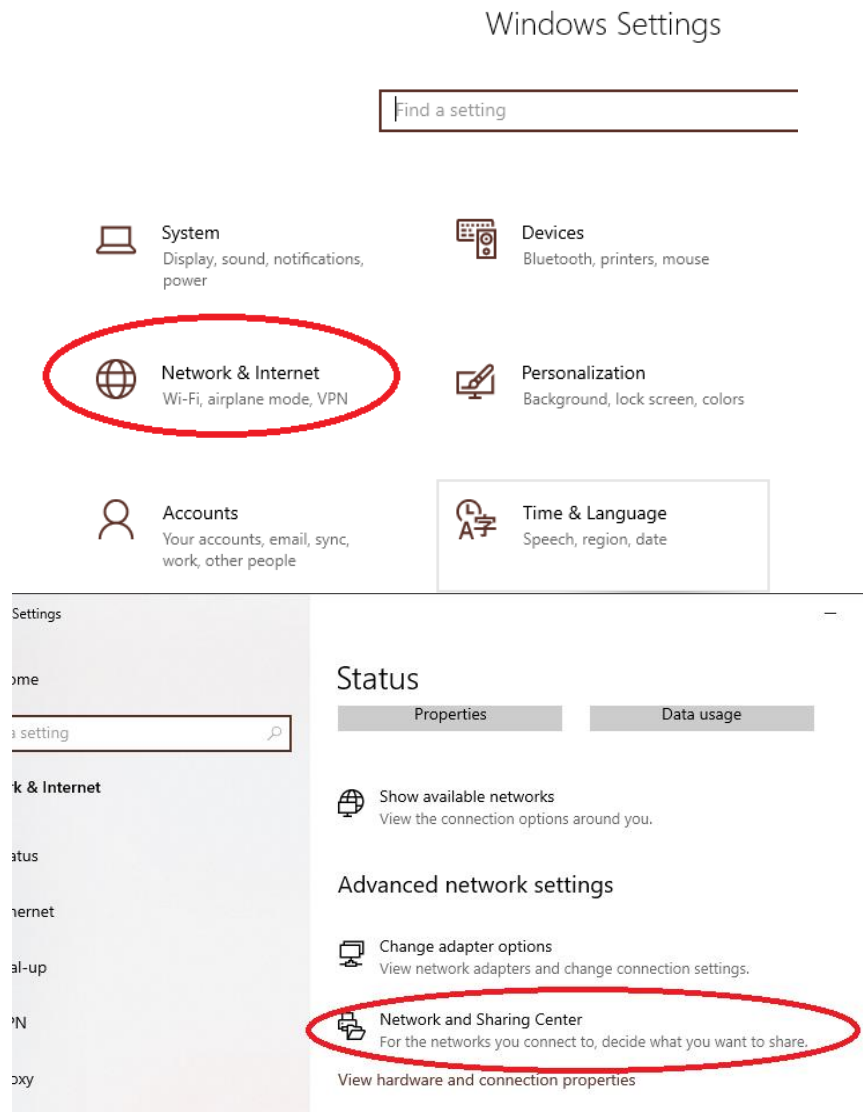
Spectrometers · Spectrophotometers · Color Instruments · Spectrographs · Monochromators

111 Highland Drive · Putnam, CT · 06260 · USA
PHONE (860) 928-5834 · FAX (860) 928-2676
<http://www.spectralproducts.com>

PC Network Settings

First, connect PC and SM245N with any regular LAN cable (SP provides a LAN cable).

1. Launch the “Network and Sharing Center” in Network & Internet Control Panel.

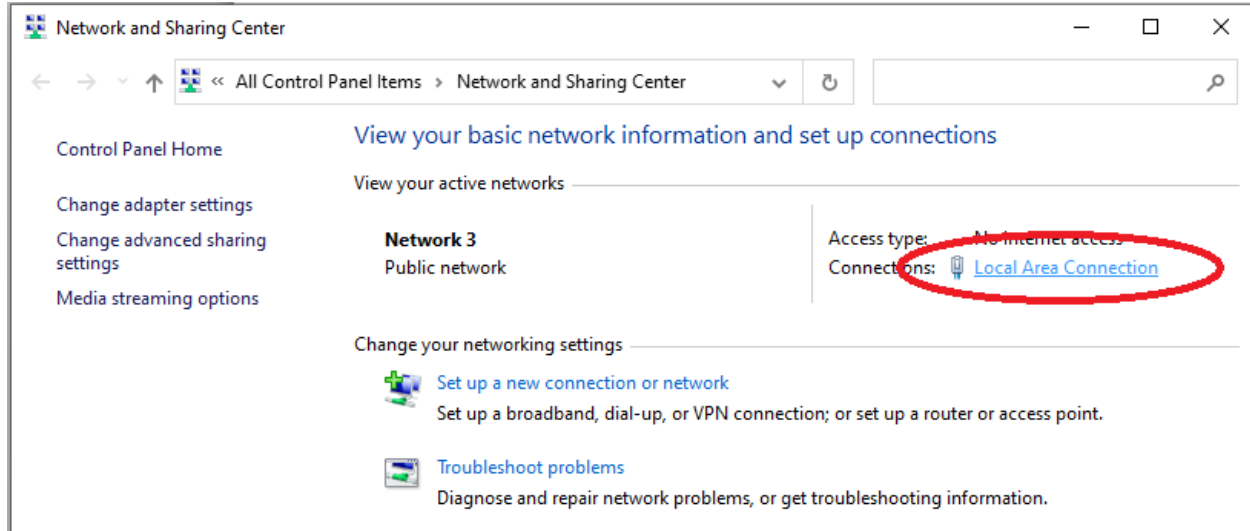


Spectral Products

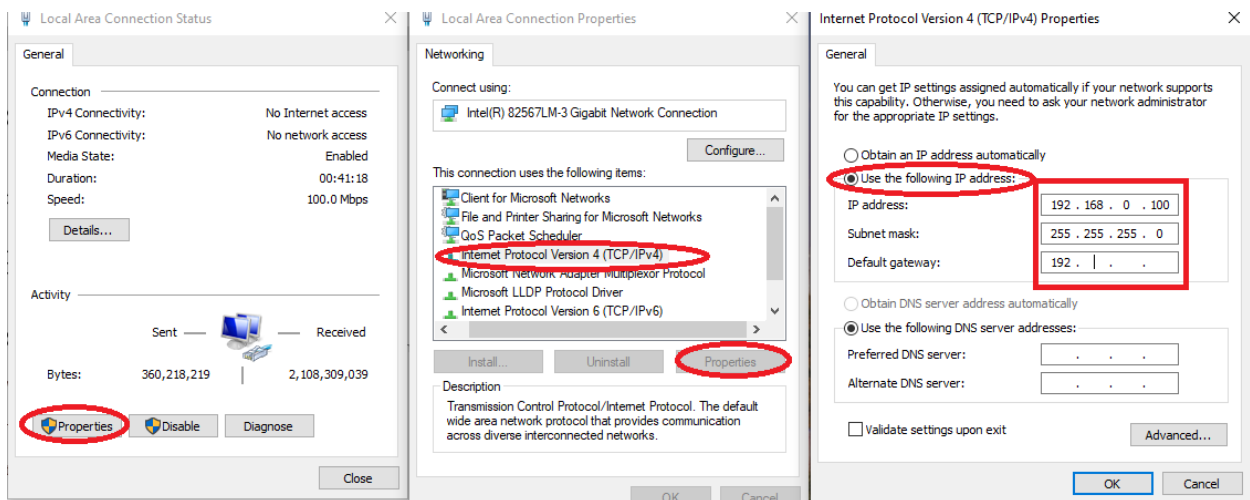
Spectrometers · Spectrophotometers · Color Instruments · Spectrographs · Monochromators

111 Highland Drive · Putnam, CT · 06260 · USA
PHONE (860) 928-5834· FAX (860) 928-2676
<http://www.spectralproducts.com>

2. Click the “Local Area Connection”.



3. At the popup window, click the “Properties”, select “Internet Protocol Version 4 (TCP/IPv4)” and click “Properties”, select “Use the following IP address:”, and type in the IP address, Subnet mask, and Default gateway.



Spectral Products

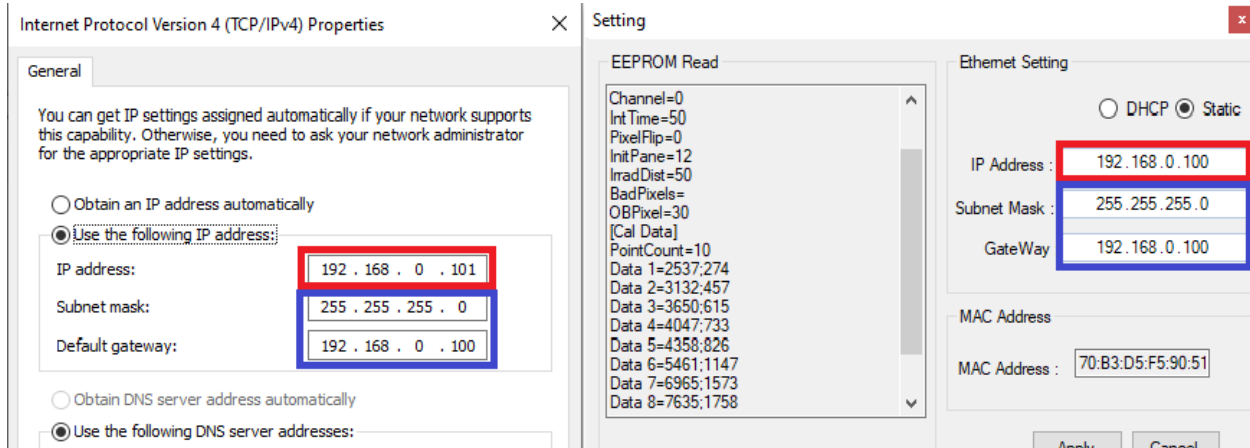
Spectrometers · Spectrophotometers · Color Instruments · Spectrographs · Monochromators

111 Highland Drive · Putnam, CT · 06260 · USA

PHONE (860) 928-5834· FAX (860) 928-2676

<http://www.spectralproducts.com>

- The IP address has to be different from the IP address that you set for the spectrometer. The subnet mask and the default gateway have to be the same.



Ex) PC: 192.168.0.100 / SM245N: 192.168.0.101

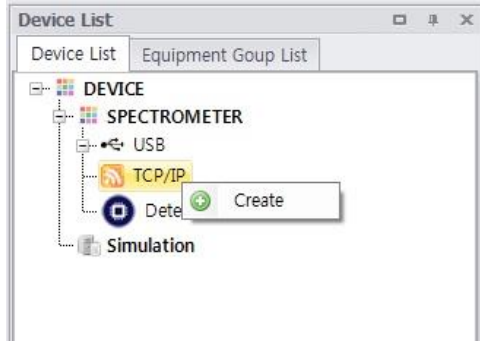
Now the SM245N is ready to use. Please launch the SMProMX and follow the next steps.

Spectral Products

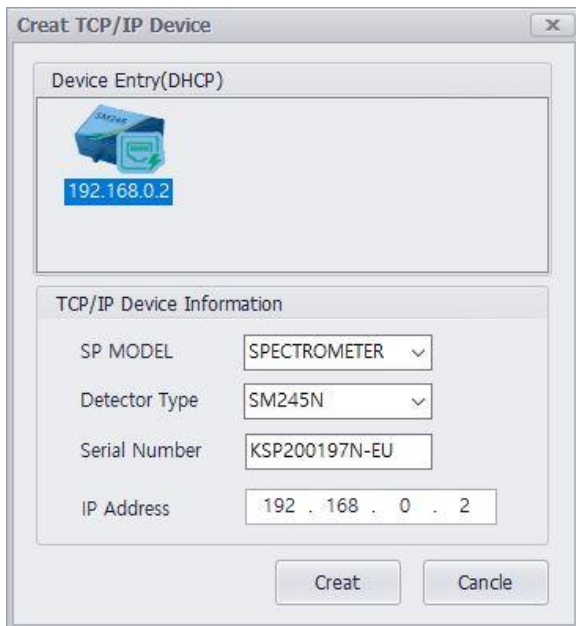
Spectrometers · Spectrophotometers · Color Instruments · Spectrographs · Monochromators

111 Highland Drive · Putnam, CT · 06260 · USA
PHONE (860) 928-5834· FAX (860) 928-2676
<http://www.spectralproducts.com>

SMProMX Device Registration

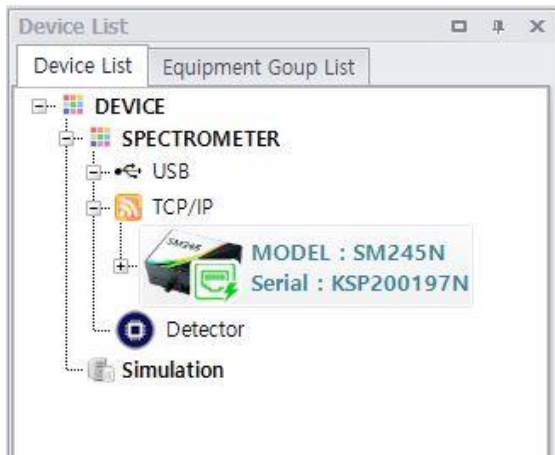


After running SMProMX software, right-click on TCP/IP in DEVICE and click Create



When the Device registration window appears as shown left, click the device icon found, confirm the values, and click Create.

✂ You can check the serial number on the bottom right of the back of the device.



On the device list, right-click on the model and choose "activation". The SMProMX will run as normal. From here, please follow the software manual.