

Spectral Products

Spectrometers · Spectrophotometers · Color Instruments · Spectrographs · Monochromators

111 Highland Drive · Putnam, CT · 06260 · USA

PHONE (860) 928-5834 · FAX (860) 928-2676

<http://www.spectralproducts.com>

Startup Guide For SM642N Spectrometer

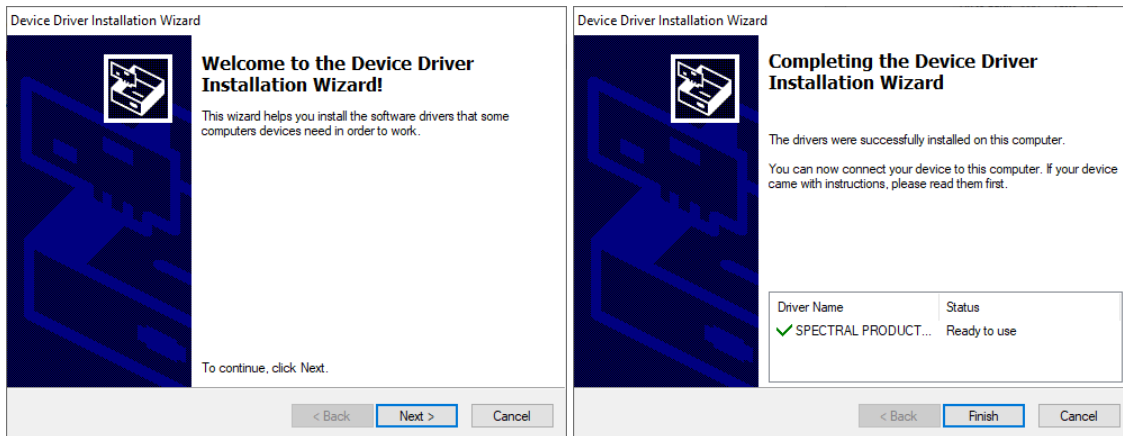
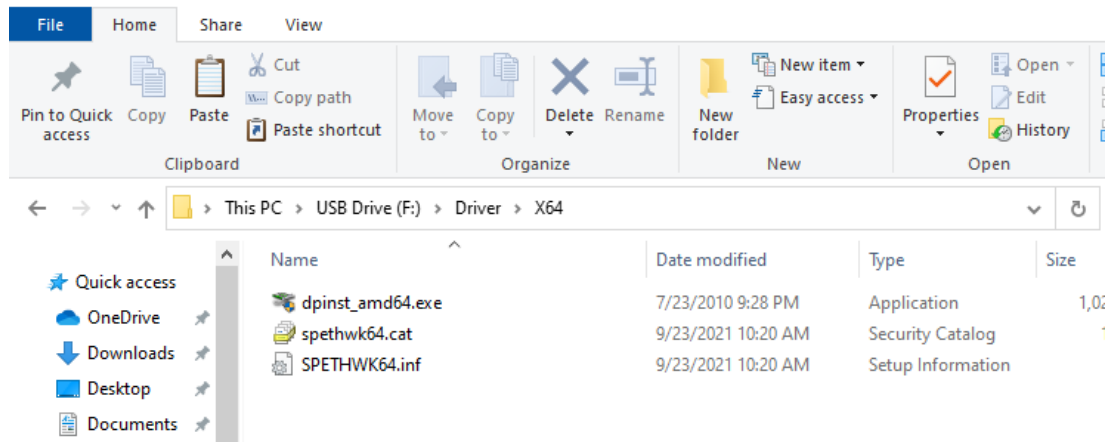
Spectral Products

Spectrometers · Spectrophotometers · Color Instruments · Spectrographs · Monochromators

111 Highland Drive · Putnam, CT · 06260 · USA
PHONE (860) 928-5834 · FAX (860) 928-2676
<http://www.spectralproducts.com>

Install Drivers

Check the USB flash drive provided along with the unit and go to \Driver. Depending on your OS specifications, go into \x64 or \x86. Run the exe file to install the driver [file name is dpinst_amd64.exe for x64bit machines, for example]



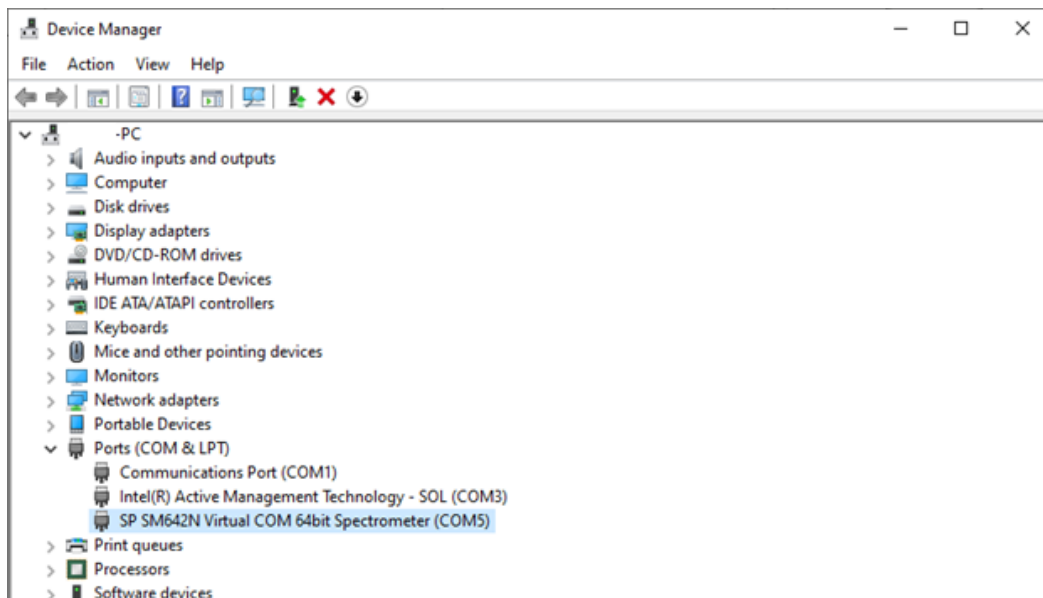
Spectral Products

Spectrometers · Spectrophotometers · Color Instruments · Spectrographs · Monochromators

111 Highland Drive · Putnam, CT · 06260 · USA
PHONE (860) 928-5834 · FAX (860) 928-2676
<http://www.spectralproducts.com>

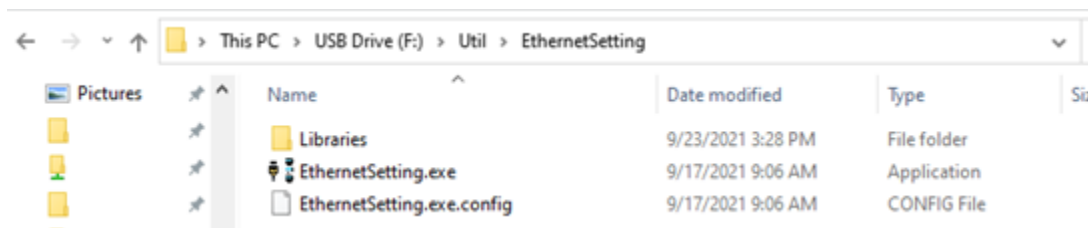
Connect Power to Device and Connect USB-C to Computer

Connect the power & USB-C to the spectrometer and USB-C to your computer. It is strongly recommended to connect the power first and then the USB, which is the right way to make USB work properly. Then go to Device Manager and check whether the computer recognized the driver properly under “Ports”. If you don’t see this, please unplug the power & USB-C, re-connect the power first, wait a few seconds, and re-connect the USB-C.



Ethernet Setting setup

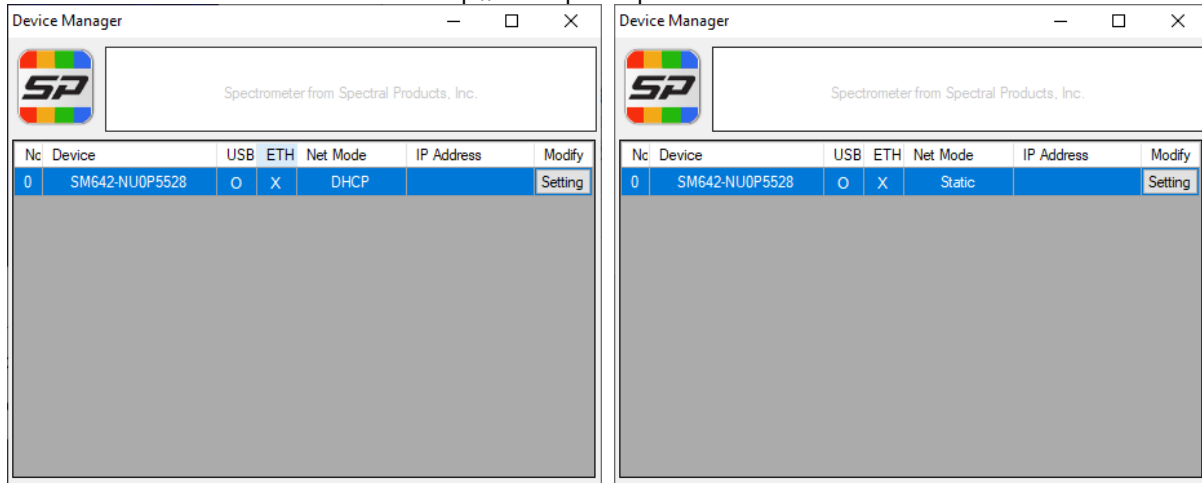
With the power and USB-C connection, go to USB flash drive, \Util\EthernetSetting folder and run “EthernetSetting.exe. The SM642N will show up in several seconds.



Spectral Products

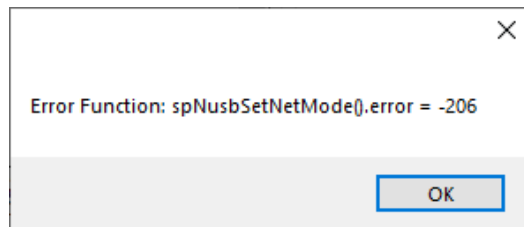
Spectrometers · Spectrophotometers · Color Instruments · Spectrographs · Monochromators

111 Highland Drive · Putnam, CT · 06260 · USA
PHONE (860) 928-5834 · FAX (860) 928-2676
<http://www.spectralproducts.com>



If the device is going to be used in a network connection configuration, the Net Mode should be “DHCP”. In case of direct connection to the computer, the Net Mode should be “Static”. To modify the mode, click “setting” button. For more details about setting the “Static” mode to use the direction connection to the computer, please refer to the other manual about this, which was provided along with the unit or in the USB flash drive, \Manual.

When changing to DHCP mode, an error may occur with an accompanying error -206 code window. This is a known bug, but will not disrupt the device setting. Please just click OK and ignore it.



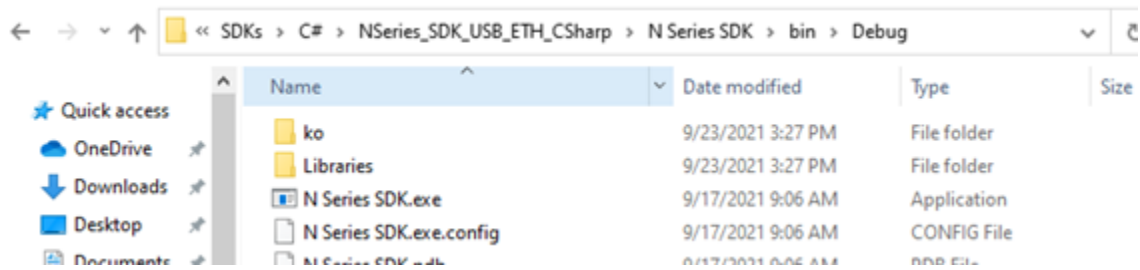
SDK (C#) compiled program

Connect your Ethernet cable from spectrometer to your online network. Near the spectrometer’s ethernet port, the green light should turn on to indicate a successful connection, and the orange light should indicate that it is processing/loading. Go to the USB flash drive, \SDKs\C#\NSeries_SDK_USB_ETH_CSharp\N Series SDK\bin\Debug, and run “N Series SDK.exe” to start the spectrometer’s reading software.

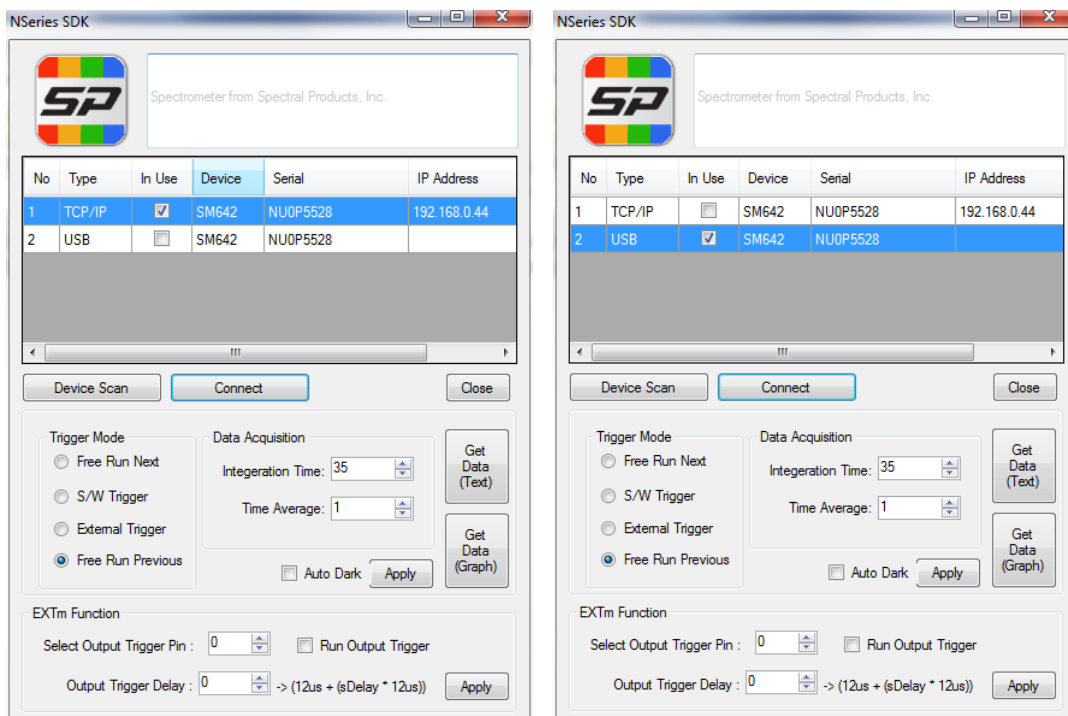
Spectral Products

Spectrometers · Spectrophotometers · Color Instruments · Spectrographs · Monochromators

111 Highland Drive · Putnam, CT · 06260 · USA
PHONE (860) 928-5834 · FAX (860) 928-2676
<http://www.spectralproducts.com>



Press on Device Scan button to scan for your SM ethernet device. It may take several seconds. The window will display the device if it is properly connected via USB-C cable and/or ethernet cable to network. You can change the input type by highlighting the other cell and pressing the Connect button.



NOTE: In case of the USB interface, the “Get Data” buttons won’t work properly if the “Run Output Trigger” was checked. The USB interface doesn’t support this yet (v1.0.0.4).